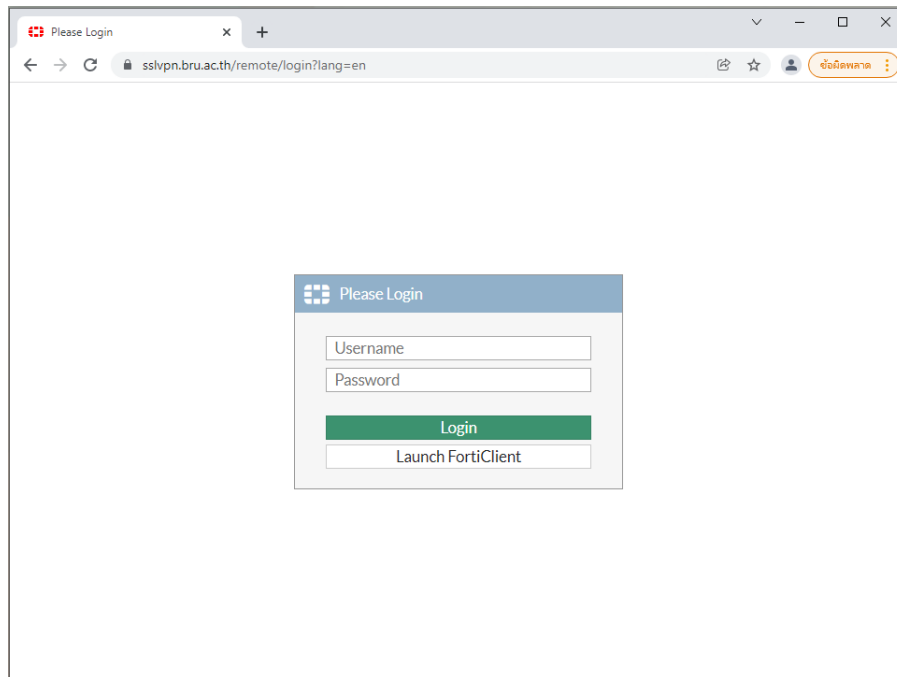
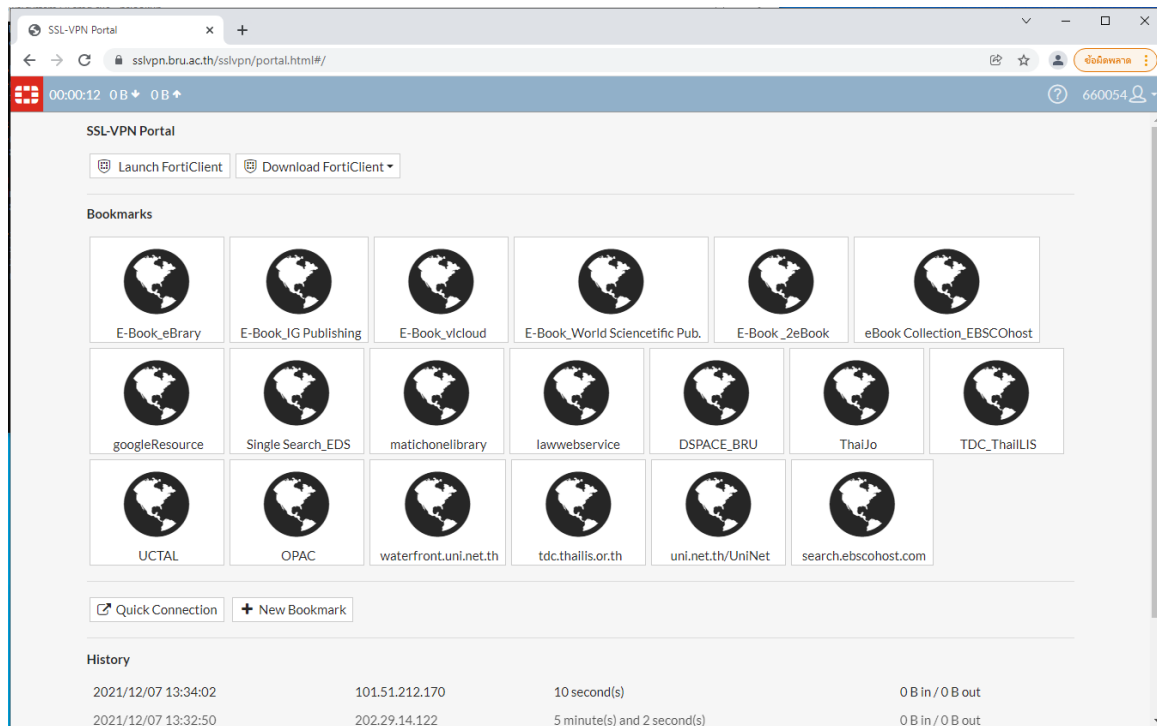


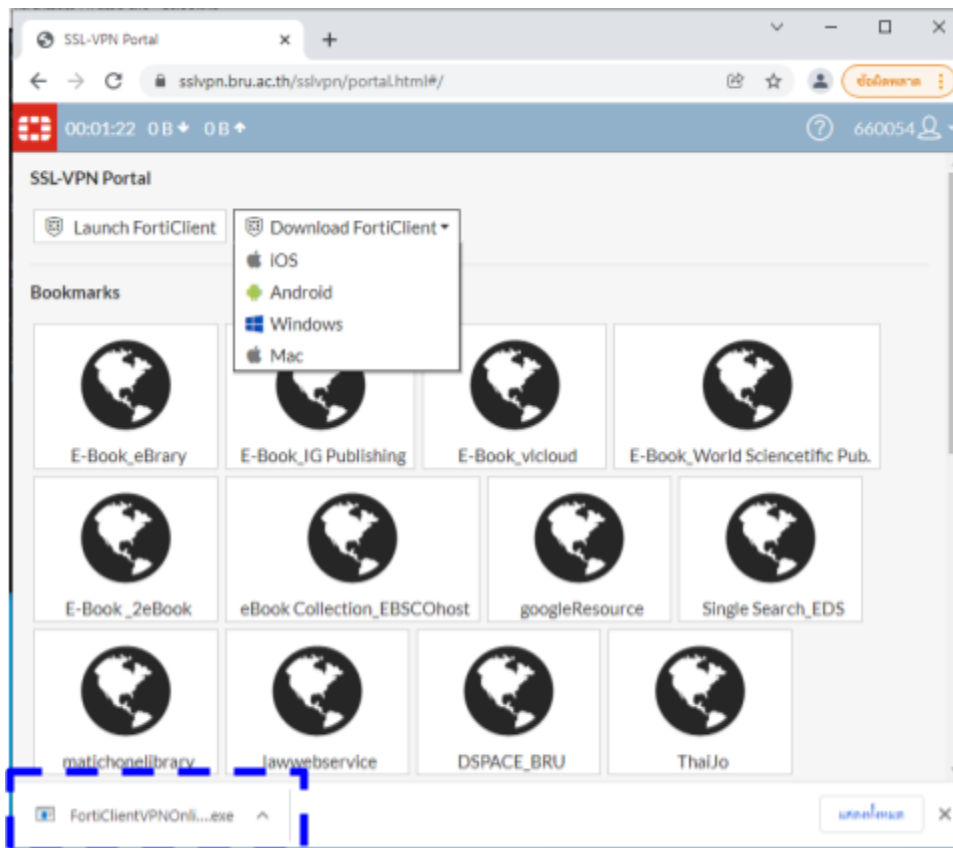
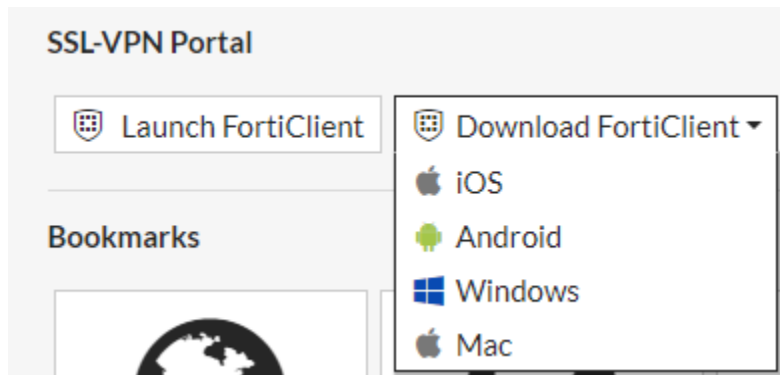
Login : <https://sslvpn.bru.ac.th>



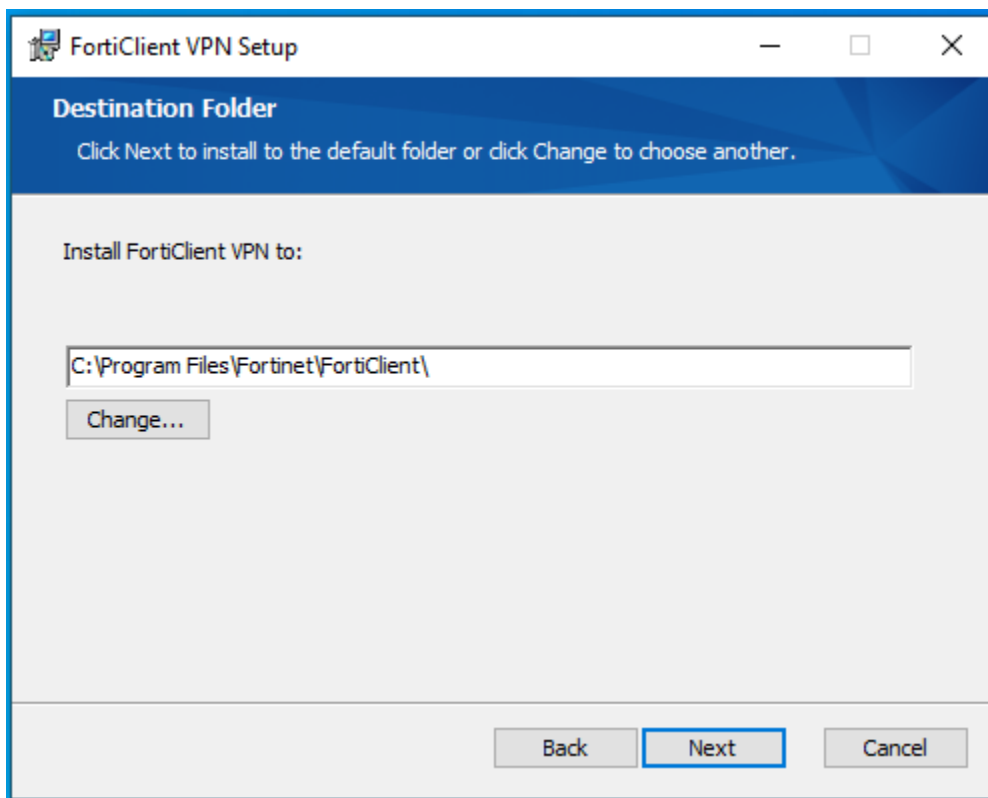
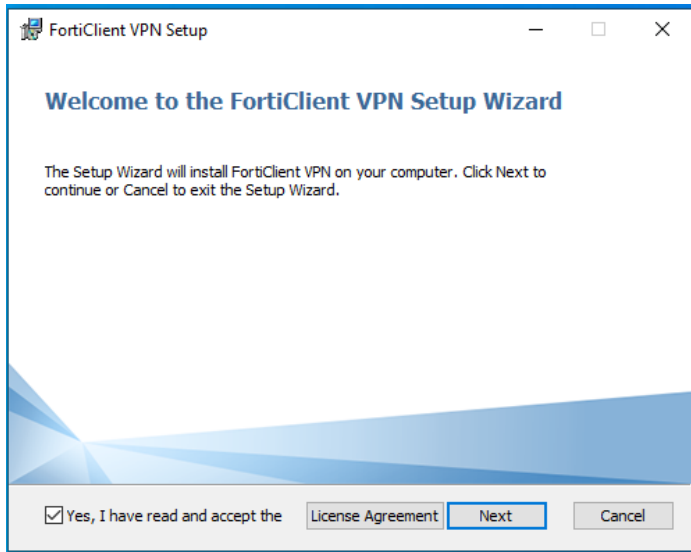
หน้าแรก

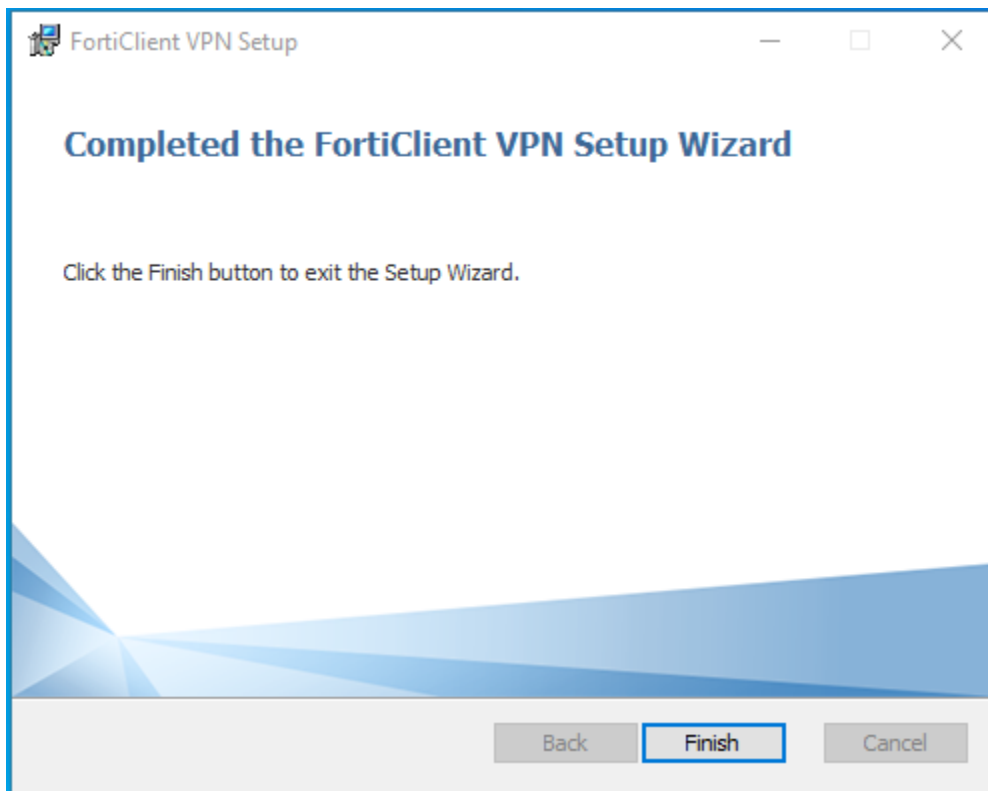
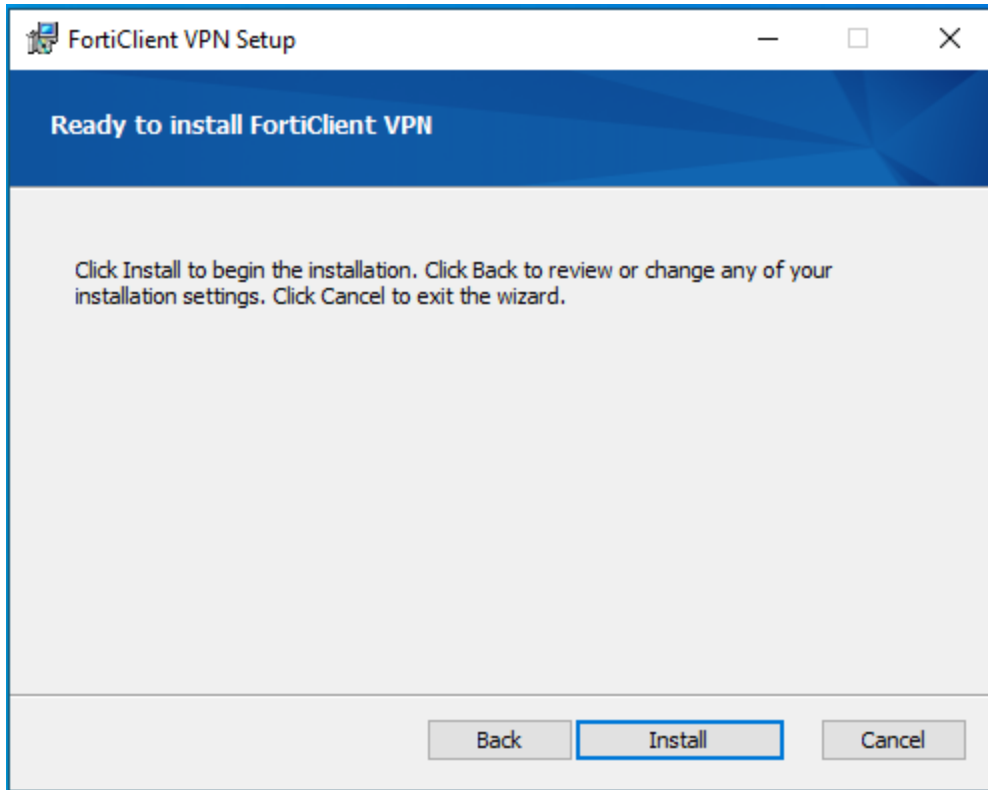


ที่เมนู “Download FortiClient” เลือก Client vpn ตาม ระบบปฏิบัติการ

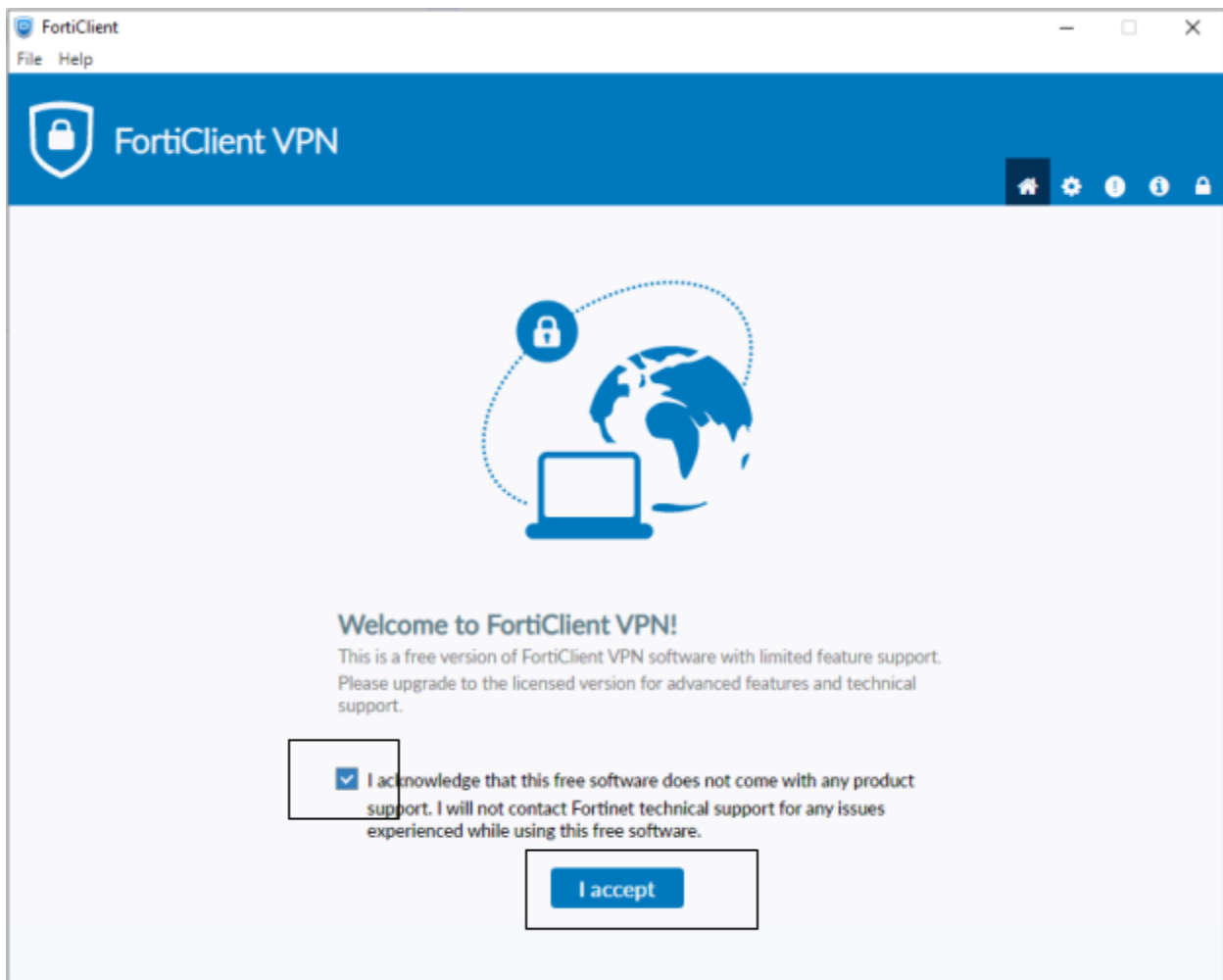


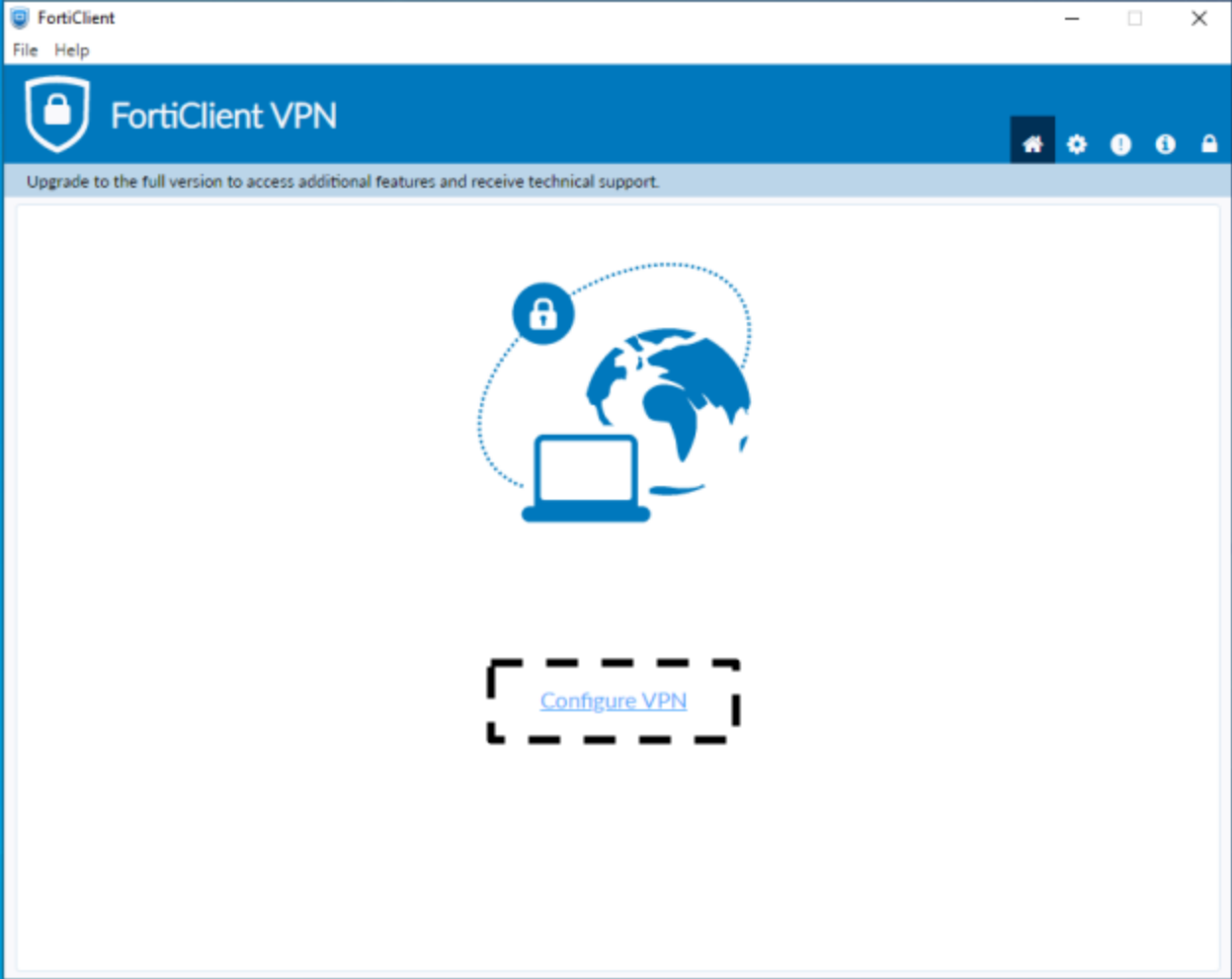
ติดตั้งโปรแกรมที่ Download





ติดตั้งเสร็จแล้ว เปิดโปรแกรมโดยเลือก จากเมนูที่อยู่ในบริเวณมุมล่างขวาของ







Upgrade to the full version to access additional features and receive technical support.

### New VPN Connection

VPN

SSL-VPN IPsec VPN XML

Connection Name

sslvpn

Description

Remote Gateway

sslvpn.bru.ac.th

+ Add Remote Gateway

Customize port 443

Enable Single Sign On (SSO) for VPN Tunnel

Client Certificate

None

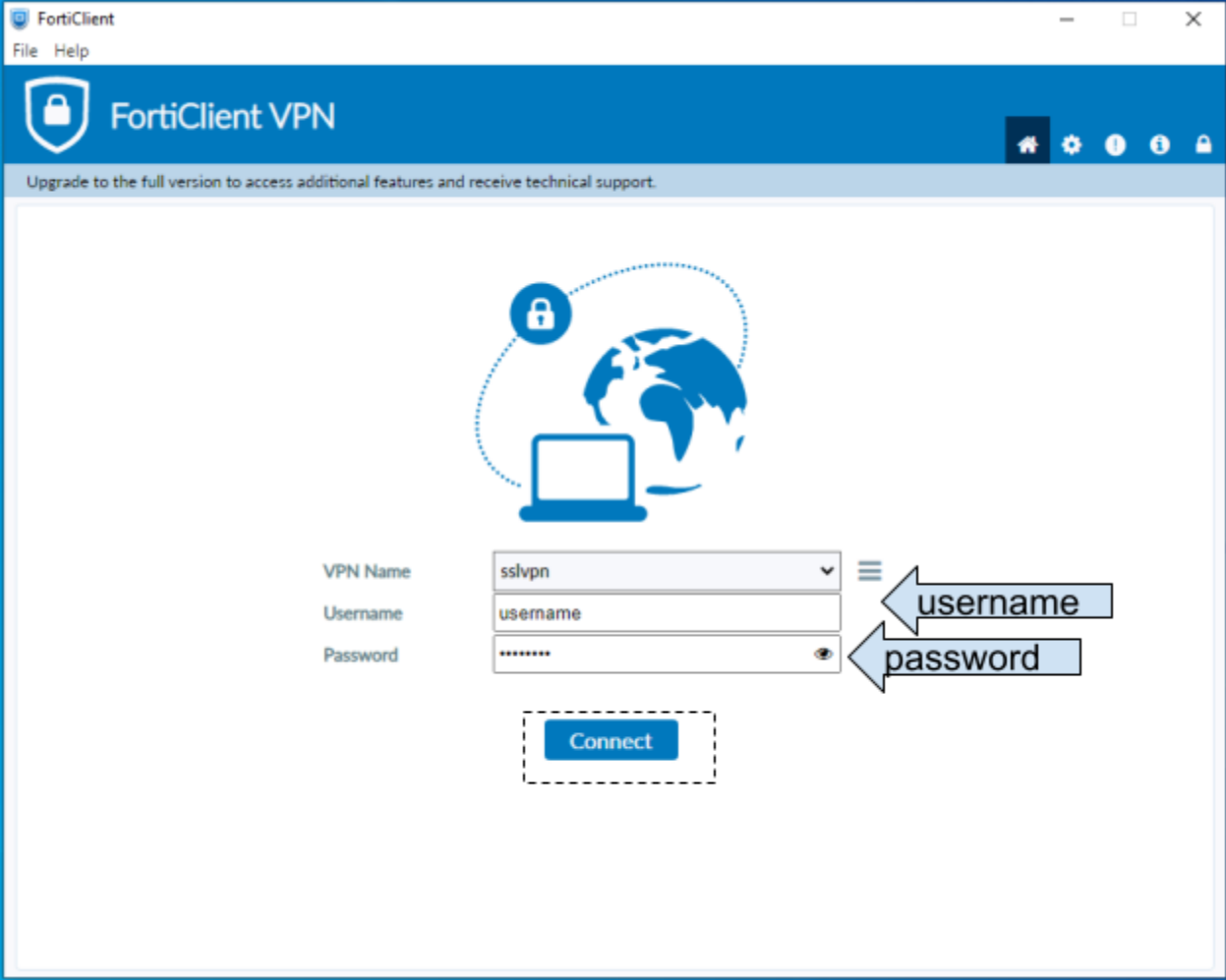
Authentication

Prompt on login  Save login

Enable Dual-stack IPv4/IPv6 address

Cancel

Save







Upgrade to the full version to access additional features and receive technical support.

VPN Connected



VPN Name sslvpn  
IP Address 10.9.134.3  
Username  
Duration 00:00:18  
Bytes Received 330.21 KB  
Bytes Sent 218.92 KB

Disconnect